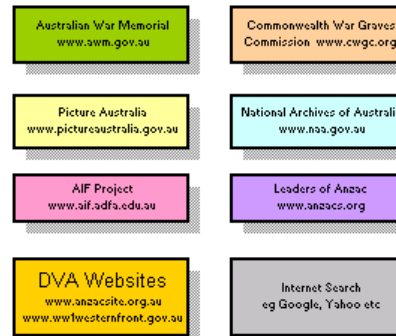
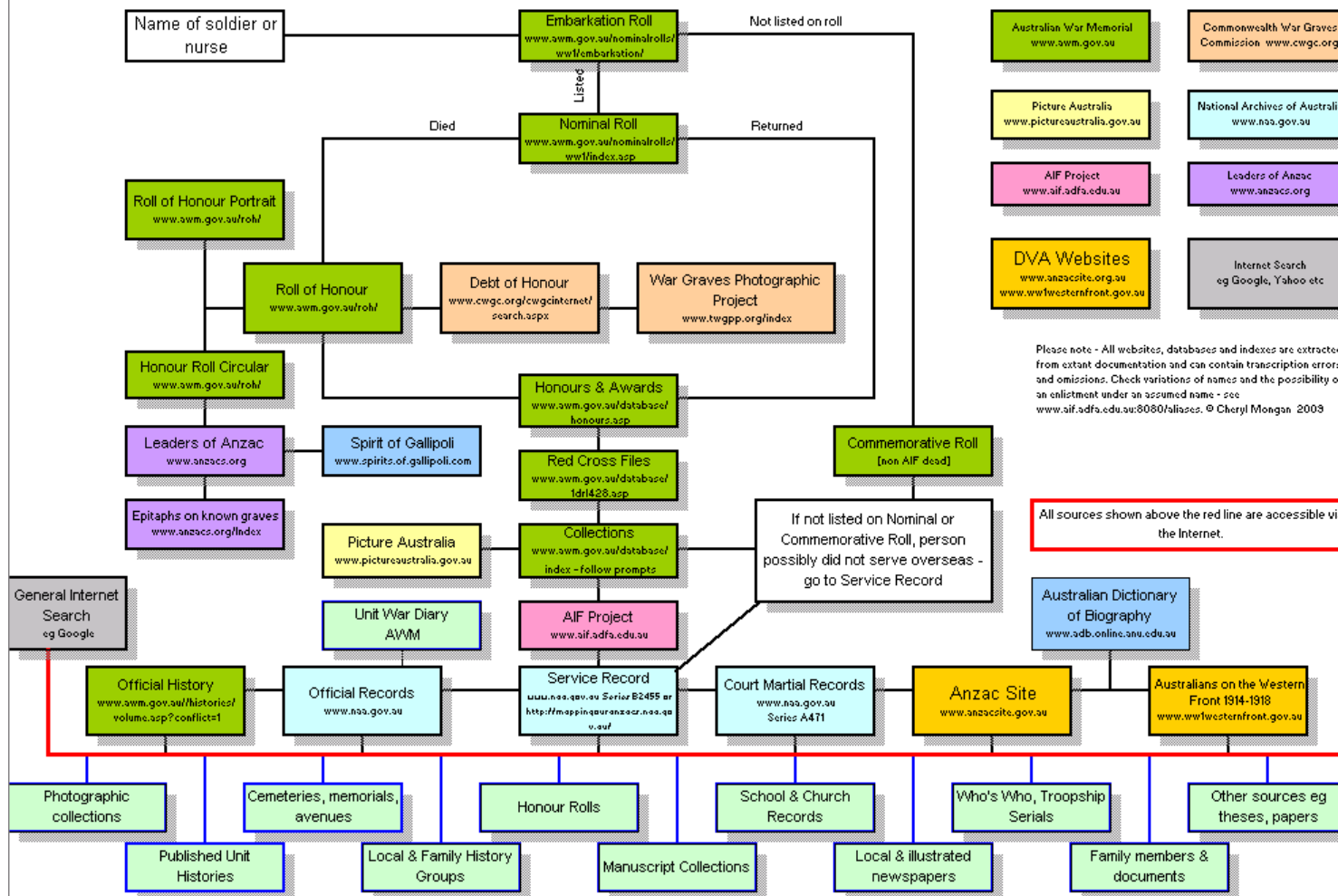


# A Guide for Researching WWI Servicemen and Women

## Key



Please note - All websites, databases and indexes are extracted from extant documentation and can contain transcription errors and omissions. Check variations of names and the possibility of an enlistment under an assumed name - see www.aif.adfa.edu.au:8080/aliases. © Cheryl Mongan 2009



All sources shown above the red line are accessible via the Internet.

Some sources listed below the red line may also be found on the Internet but most will found in libraries, archives, local history and personal collections.